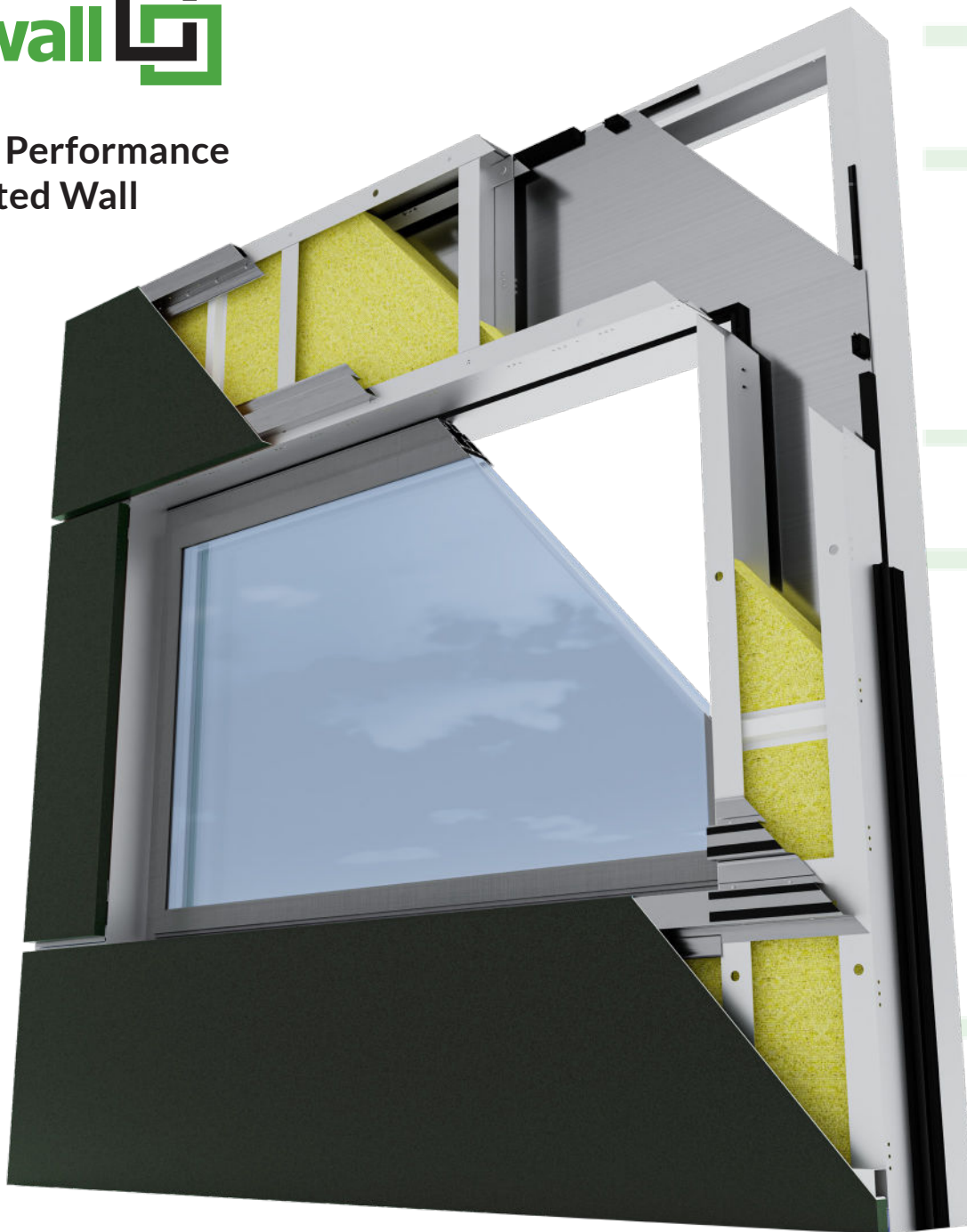




Ultra-High Performance Prefabricated Wall Systems



Building Better Starts With the Wall

UnitiWall Corporation offers the most comprehensive prefabricated wall panel system that streamlines the construction process and significantly reduces the cost of building ownership, building better and faster for everyone.



Efficient



Unitized



Durable



Versatile



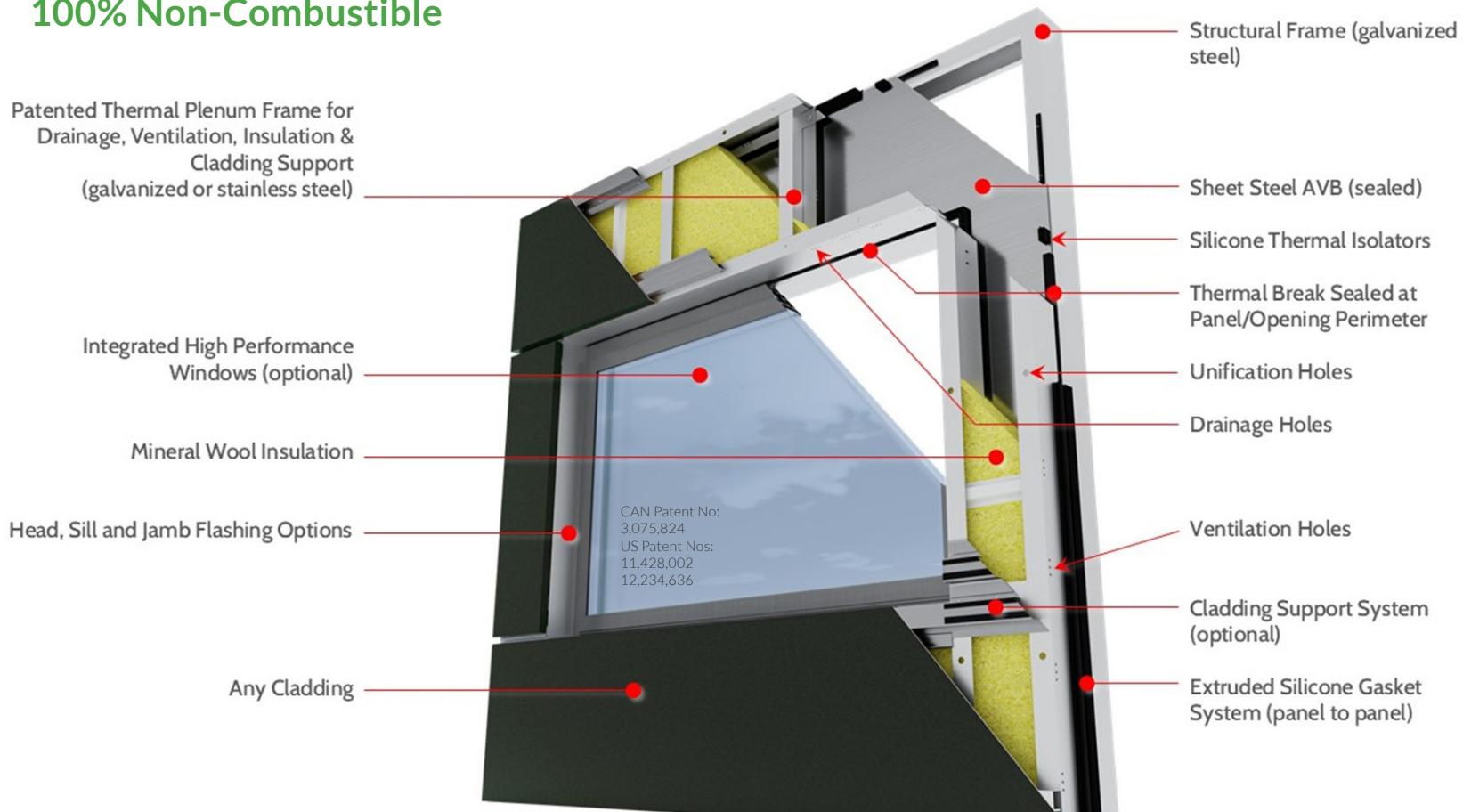
Sustainable



Aesthetic

The All-In-One Solution

100% Non-Combustible



Wall-to-Wall Technology of the Future

Step into a world of innovation with UnitiWall, where you're invited to discover the all-in-one panel solution that is revolutionizing the way buildings are constructed. Our Patented Thermal Plenum Technology is sustainable and resilient, allowing you to enjoy the benefits of true rainscreen functionality and exceptional thermal separation. You have the ultimate freedom to design buildings that stand out. Our wall solutions elevate your buildings' standards and redefine the very essence of modern construction.

Whether you're working on a new build or a retro fit, including full re and re and overclad, panels can be configured within size formats, complete with virtually any cladding and window options to suit your project design specifications. Experience unparalleled site efficiencies and quality standards, along with an accelerated construction schedule and significantly reduced energy consumption, all saving you time and money.

Design Freedom. Thermally Broken. True Rainscreen Functionality.

What We Build

- ♦ Educational Institutions
- ♦ Hospitals
- ♦ Government Buildings
- ♦ Long-Term Healthcare Buildings

Who We Work With

- ♦ Architects
- ♦ Engineers
- ♦ Constructors
- ♦ Building Owners & Developers

Where sustainability meets artistry,
and efficiency embraces innovation.
Discover a new era of architectural
brilliance.

Fully Compatible with Virtually
any Cladding and Window System

Performance Tested for Superior Specifications			
Based on Clear Wall 15" cold-formed steel assembly with 8.75" of mineral wool insulation, 6" framing wall and steel cladding system			Upper Test Limits
Effective R30+ ($U = 0.18W/m^2K$)*		CSA Z5010:21	Modelled Data
Weather Resistance	Preload - Wind Pressure	ASTM E330-14	+/-1, 125Pa
	Air infiltration/exfiltration (static pressure)	ASTM E283-19	<0.1 L/s.m at +/-300Pa
	Plenum Ponding Test	AAMA 511	735Pa
	Water penetration (dynamic pressure)	AAMA 501.1-17	720Pa
Structural	Uniform Structural Design Load	ASTM E330/E330M-14(21)	+/-3,375Pa
	Interstory horizontal displacement (left/right)	AAMA 501.4-09	+/-6mm
	Interstory horizontal displacement (in/out)	AAMA 501.4-09	+/-9mm
	Interstory vertical displacement (up/down)	AAMA 501.7-11	+/-19mm
	Interstory horizontal (Inelastic drift) (left/right)	AAMA 501.4-09	+/-10mm
	Interstory horizontal (Inelastic drift) (in/out)	AAMA 501.4-09	+/-14mm

*Optional enhanced performance with closed cell insulation to interior structural cavity, where possible.

Our clients are eager to reshape the future of construction. Architects, Owners and Constructors who value innovation, efficiency, and sustainability are our ideal partners. We welcome those who dare to challenge the status quo and embrace versatility to create cutting-edge structures that stand as testaments to sustainability and resiliency.


Join us in sharing the passion for redefining the way we build, one wall panel at a time.

**FASTER
INSTALLATION**

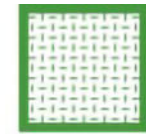
Up to 80%

**INCREASED
THERMAL
PERFORMANCE**

Up to 80%



**Significant economic
and CO₂ emissions
savings**



Specialty Metals



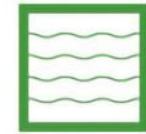
Glass



Wood



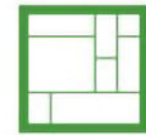
Phenolic



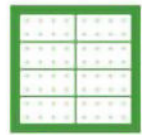
Terracotta



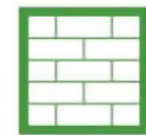
Solar Shading



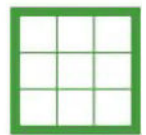
Fiber Cement



Concrete



Brick



Porcelain



Extruded/Perforated
Metals



Slate

Commitments:



Do Better. Build Better. Make the World Better.



Efficient

Unmatched performance with an effective R30+ ($U = 0.18W/m^2K$)*, supporting envelope-first design strategies for high-performance buildings.

*dependent on panel size and panelization plan



Durable

Engineered to exceed next-gen building codes and integrated with the industry's most durable claddings, UnitiWall is built to last and reduce maintenance costs.



Unitized

Prefabricated off-site with the work of multiple trades "built-in", allowing your construction schedule to take a giant leap forward in production.



Versatile

Architectural freedom that honours original design intent with compatibility for all premium rainscreen claddings, and integrated windows.



Sustainable

Utilizing recycled and/or recyclable materials, our patented Thermal Plenum technology surpasses code requirements. With a commitment to local sourcing, we're advancing towards a Zero Carbon future.



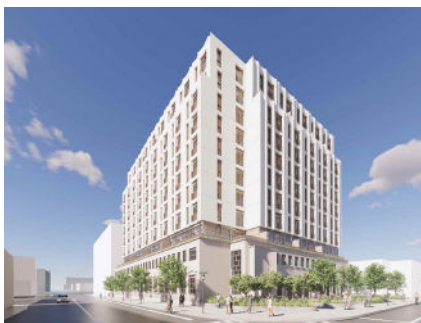
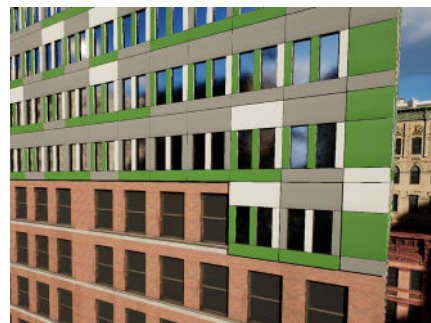
Aesthetic

Glass, stainless steel, granite, aluminum, ACM, GFRC, brick, and more...We bring your design to life with our fully unitized, rainscreen wall system.

Technically, it's a wall. Technologically... it's magic.

UnitiWall for Retrofits

Take a giant leap forward in technology and efficacy with our all-in-one solution for energy-efficient retrofits. Fully unitized, these wall systems come prefabricated and ready for installation, ensuring energy savings, GHG reductions, and sustainability advantages.



UnitiWall for New Buildings

With the work of multiple trades built-in and a remarkable installation process managed from the inside out, our system provides for full design flexibility. Drastically reduce cost, risk, and labour requirements by up to 80%, ensuring overall project success.

Notable Project

Academic Wood Tower at the University of Toronto

As one of Canada's tallest mass timber projects, at 15 storeys (80 metres) tall, UnitiWall is providing the entire exterior opaque building envelope. At the forefront of technology, our system seamlessly integrates, to ensure an air- and watertight resilient exterior. This endeavour sets a new global standard for prefabricated wall systems, defining excellence in sustainable construction.



Members of:



UnitiWall Corporation

2520 Haines Road
Mississauga, Ontario L4Y 1Y6
info@unitiwall.com 905-816-1641